

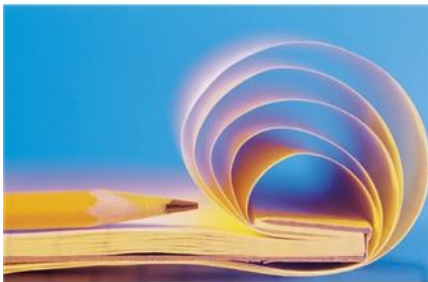
Books

The Best Punctuation Book, Period: A Comprehensive Guide for Every Writer, Editor, Student and Business Person
by **Casagrande**

McGraw-Hill's Concise Guide to Writing Research Papers by **Ellison**

Cite it Right: the SourcAid LLC Guide to Citation, Research, and Avoiding Plagiarism by **Fox, Johns, & Keller**

MLA Handbook for Writers of Research Papers by **Gibaldi**



Schaum's Quick Guide to Writing Great Research Papers by **Rozakis**

A Manual for Writers of Research Papers, Theses and Dissertations: Chicago Style for Students & Researchers
by **Turabian**

Research Papers for Dummies
by **Woods**

**Look in the
Non-Fiction
Section: 808**

The Cliffside Park Public Library
505 Palisade Ave.
Cliffside Park, NJ
07010

Compiled by: **Danielle Serra**
Young Adult Librarian

**Help!
I Have a
Research Paper!**

**Resources to
help you get
it done.**



Online Resources

Internet Detective: Wise Up to the Web

<http://www.vtstutorials.ac.uk/detective/>

Online research tool and free tutorial to evaluate the information students find online.

OWL Online Writing Lab

<http://owl.english.purdue.edu/>

Purdue University's writing lab provides help with style guides, grammar and research papers.

A Research Guide for Students: Writing Guide

<http://www.aresearchguide.com/writing-guide.html>

Research resources collected by scholars and librarians for student use.

Son of Citation Machine

<http://citationmachine.net/index2.php>

Online resource that generates citations for MLA, APA, Chicago and Turabian writing styles.

UC Berkley Library: Critical Evaluation of Resources

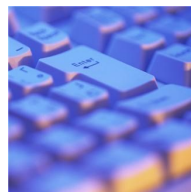
<http://www.lib.berkeley.edu/instruct/guides/evaluation.html>

UC Berkley's guide to evaluating resources when conducting research for a paper.

The Writing Center @ The University of Wisconsin-Madison

<http://writing.wisc.edu/Handbook/index.html>

University of Wisconsin's writing center provides tips on writing research papers.



Brainfuse HelpNow

Brainfuse offers two options for writing assistance:

Between the hours of 3:00pm-11:00pm patrons can **connect with a live writing tutor** for help writing their papers, essays etc. This is especially useful for students just starting on their assignments and looking for guidance, for those working on shorter assignments or those needing immediate help.

Another option is to upload a document to the **Writing Lab** via Brainfuse's secure filing sharing portal. The Writing Lab is available 24/7. A writing instructor will then provide an in depth analysis of the work submitted with constructive feedback-typically within 24 hours of the initial document submission. (Patrons must check the My Message Center inbox of their Brainfuse accounts.)

Note: These tutors and instructors will NOT write the papers for the patrons.

**Access Brainfuse via the
Cliffside Park Public Library's website:
<http://cliffsidepark.bccls.org/>
Click on the icon shown above
and create your free account today!**